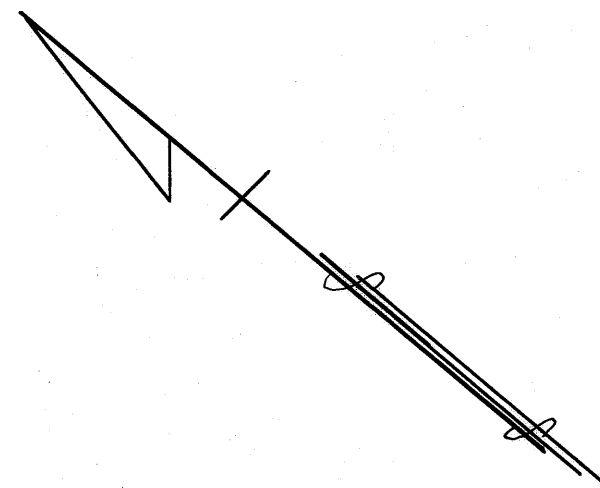
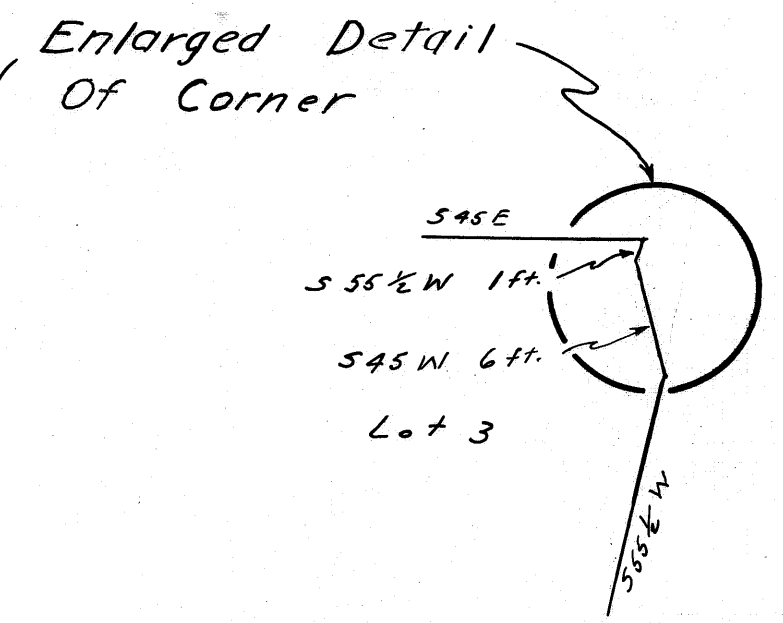
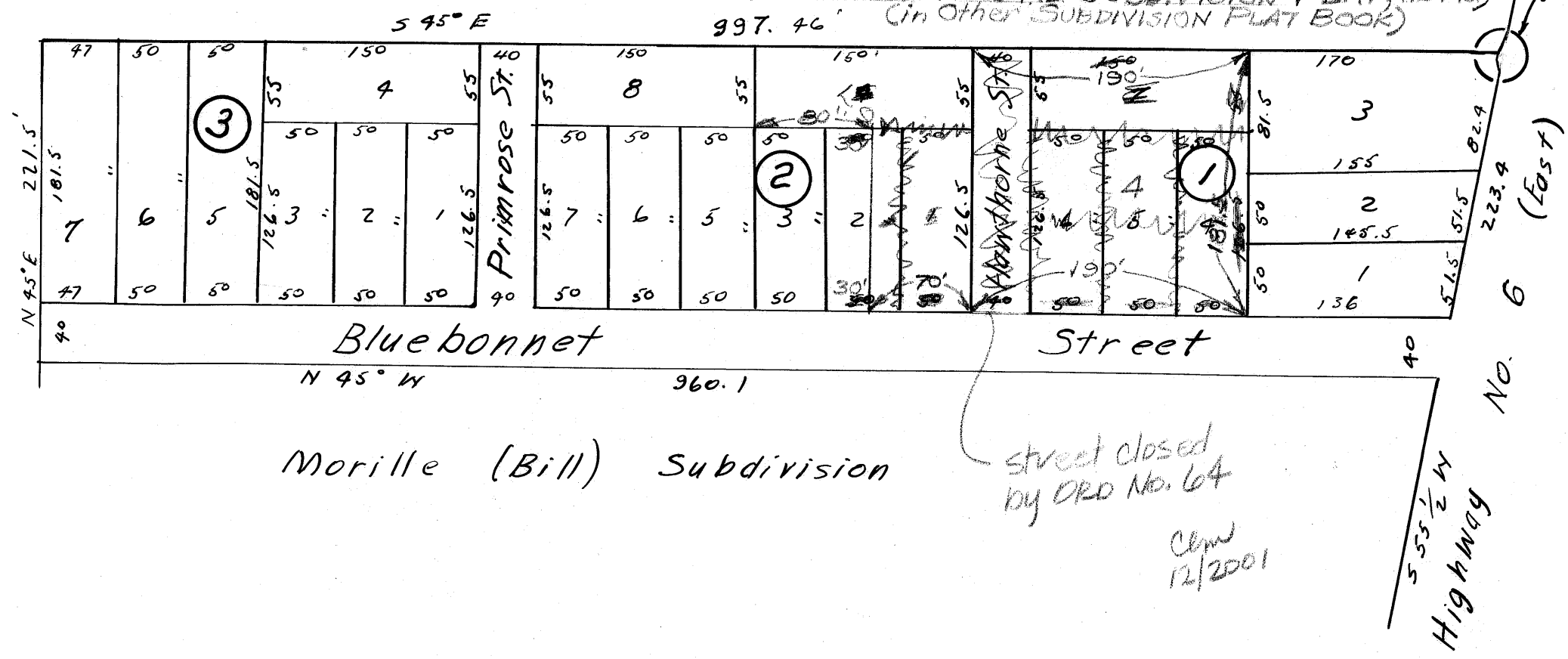


THOMPSON (DURWOOD) SUBDIV.
of a 2.22 Acre Tract and a 2.8 Acre
in S.F.A. #10 as described in
Vol. 137, Page 224

D.R. 137 Page 441
Dec. 21, 1948
Scale: 1" = 100'
Surveyed By: C.A. Bartholow



NOTE:
LOTS 1-7, BLOCK 1 & LOTS 1, 4 & PART OF 2, BLOCK 2
RE-SUBDIVIDED
AND HAWTHORNE ST. CLOSED DEC. 14 1972
(SEE VACATING & RE-SUBDIVISION PLAT, 1.8 AC.)
997.46' (in other SUBDIVISION PLAT BOOK)



355

on land base
5/16/61
WD